



THE HACKNEY SOCIETY

# SPACES 2016

News and views about Hackney's built environment

Issue 54 Autumn 2016 // ISSN 2047-7465

## Barretts Grove



**Spruce Apartments in Barretts Grove in Stoke Newington accommodates two three-bedroom family maisonettes, three two-bedroom flats and one studio. Set on the boundary of a conservation area, it stands between a tall Victorian buff-coloured semi-detached townhouse and an Edwardian red-brick primary school. Its form echoes the slender gables of the school and stand-alone presence of the neighbouring 'villa' archetype.**

Designed by Amin Taha Architects, the building (originally named Nordic Lofts) retains a simplistic profile generated through consultation with primary school pupils, their understanding of house and home, and knowledge of building technology pitfalls.

Cross laminated timber (CLT) is used for all wall, floor and roof superstructure on a concrete and brick basement box. Internally the CLT is left exposed and finished with a clear fire retardant varnish. Insulation, a vapour barrier and self-supporting brick rain-screen make up the exterior thermal and protective envelope.

Acoustic resilient layers and boards, insulation and a floating timber floor are

built up above the floor superstructure and accommodate underfloor heating, power, data and hot/cold water services. The ability of the CLT to serve as structure and finish removed the need for plasterboarded walls, suspended ceilings, cornices, skirtings and finishes such as tiling and paint. While simplifying the architectonic form and allowing the exposed structure's material qualities to drive a warmer and perhaps better connected tactile aesthetic, this strategy reduces the embodied carbon of the building, its construction cost and time on site.

*The building has been shortlisted for the 2016 Hackney Design Awards.*



Photos: Tim Soar



### contents

- 01 Barretts Grove
- 02 Amhurst Road Rescue Home
- 02 Hackney Design Awards 2016
- 03 200 Years of Methodism in Stoke Newington
- 03 People's History of Lower Clapton
- 04 Noticeboard
- 04 Publications
- 04 Events

Help support our work by joining the Hackney Society. Call on 020 7175 1967 or email [membership@hackneysociety.org](mailto:membership@hackneysociety.org) or visit [www.hackneysociety.org](http://www.hackneysociety.org)

## Amhurst Road Rescue Home: A new discovery in The Salvation Army archives

the cells we talked  
st women in the  
iseased body and  
nts her sentence,  
herself for her con-  
assured us of her  
ar still and  
the oft-re-  
he Rescue  
gin again.

which became available just a  
time to save the erection of s  
Hall on the spot occupied by  
the Harvest Marquee.



By Ruth Macdonald\*

**At the Salvation Army International Heritage Centre, we hold a remarkably complete record of the organisation's social work among the women of London. However, recent cataloguing revealed that we hold records from more Hackney rescue homes than previously thought.**

The first Salvation Army rescue home for women was established in Whitechapel in 1884 but after just a year it had outgrown its original premises and moved to larger accommodation at 48 Navarino Road. Another year on and two neighbouring houses at numbers 44 and 46 had also been taken over. The Salvation Army's tenancy in Navarino Road was to prove short-lived (according to one source 'neighbours took exception to the singing, and conspired to have The Army ejected'), but it marked the beginning of a long and visible presence in Hackney.

The three Navarino Road homes quickly found new premises and each developed a specific industry in which residents were trained. 'London I' home in Stamford Hill taught machine knitting, 'London II' in Clapton Square taught needlework, while 'London III' at 183 Amhurst Road specialised in making 'washing texts', washable wall hangings bearing hand-embroidered mottoes. Income from selling these products contributed to the running costs of the homes.

Until recently we believed that resident records had only survived from the knitting home. This home moved from Stamford Hill to Lanark House on Laura Place in 1896. However, while cataloguing the knitting home records we discovered that one mislabelled book of residents' statements actually belonged to Amhurst Road home. This exciting discovery has opened up new possibilities for research into historical social work in Hackney.

### NEW TEXTS FOR THE NEW YEAR.

FOR SITTING-ROOM, KITCHEN, BEDROOM, NURSERY, HALL.



**W**E highly commend the example of the two comrades who have adorned their kitchen wall with a useful and pretty text. "Just the very thing," Mary says, and Annie agrees, so does the mistress, when she comes in.

The New Text Industry has its own special claim on admirers of beauty and durability combined, seeing the work is done in artistically-painted design on American cloth.

The texts will wash and look quite new. It is certain they will become favourites.

Address—

SECRETARY,

183, AMHURST ROAD,

HACKNEY, E.



\*Archivist, Salvation Army Heritage Centre

*The Salvation Army International Heritage Centre is on the third floor of William Booth College, Camberwell, London, SE5 8BQ. It is open to the public Tuesday-Friday 9.30am-4.00pm. Website: <http://www.salvationarmy.org.uk/international-heritage-centre>*

## Hackney Design Awards 2016

The shortlist for this year's Hackney Design Awards has been announced. The 16 buildings are 7 Atherden Road, the Bath House Children's Community Centre, Buccleuch House, Copper Lane, the Cube Building, Deborah House, Frampton Park Baptist Church, Hackney New School, Lansdowne Drive (Passivhaus, see *Spaces 51*), Barretts Grove (see front page), Pembury Circus, St Mary

of Eton Church (see *Spaces 52*), 96-100 Shepherdess Walk, Skyline (Woodberry Down), 18-42 Wharf Road and Woodberry Wetlands.

The biennial awards celebrate great design in architecture, urban design and landscape architecture in Hackney. They were launched in 2004.

## 200 Years of Methodism in Stoke Newington

By Ruth Slatter

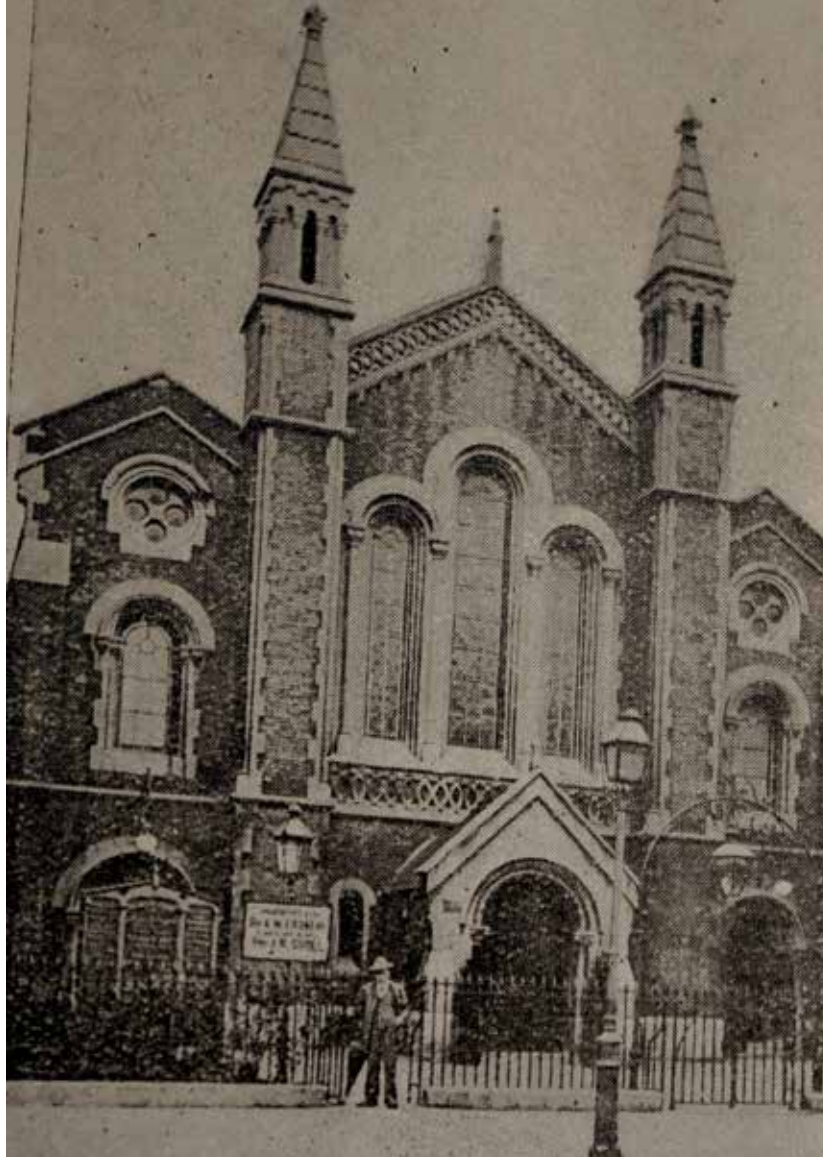
Exactly 200 years after the opening of the first Methodist Church in Stoke Newington, the new High Street Methodist Church will host its opening services on 27 November 2016.

The new church was built in association with London Wharf plc and Julian Cowie Architects. It is the fourth Methodist Church to have been built on this site. The first opened in 1816 and was a simple brick building measuring 46 feet long, 30 feet wide and 22 feet high.

By 1850 this building was too small for the church's growing congregation and was replaced with a larger gothic revival building. Badly bomb damaged during the Second World War, this Victorian church was replaced in 1957 by a simple, single-storey building ornamented by a circular stained glass window.

By the early 21st century this building no longer met the needs of the congregation. The new building is purposefully light and airy. Built on four storeys, it has a ground floor façade made entirely of glass. Welcoming visitors into a large lobby, these windows are ornamented by the re-erected circular stained glass window from the 1957 church. The lobby leads into the sanctuary and several smaller rooms on the ground floor, and on the floors above there is a church hall, kitchen and outdoor area. It is hoped that this flexible space will become a hub of activity on the busy High Street, used for church events as well as by local community organisations.

A free exhibition and heritage walking tour have been organised to celebrate the opening of the new church and the 200th anniversary of Methodism in Stoke Newington. All are welcome.



### Exhibition – Stoke Newington High Street Church, N16 7NY

#### Opening Times

Sunday 20 November: 1- 4pm,  
Monday 21 – Friday 26

November: 12 – 2pm and 5 – 7pm  
Saturday 26 November: 11am – 6pm  
Saturday 3 December: 11am – 6pm

For more information visit: [www.stokeymethodisthistory.com](http://www.stokeymethodisthistory.com)

Follow us on twitter: @stokeymethodist

### Stoke Newington and its Methodists: a History Walk

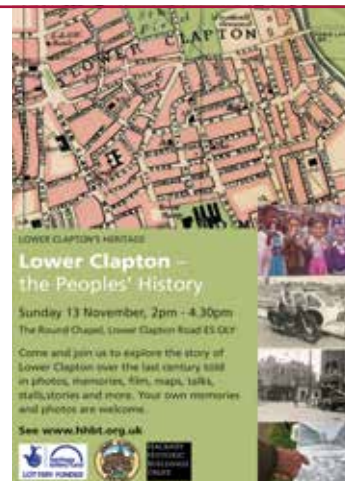
Saturday 19 November: 11am – 2pm

This event is free, but booking is essential. Please book a place at: <https://www.eventbrite.co.uk/e/stoke-newington-and-its-methodists-a-history-walk-tickets-27412445362>

## People's History of Lower Clapton

By Carolyn Clark

Lower Clapton Heritage Project volunteers have been collecting local memories and stories as well as photos and material about Lower Clapton over the last 100 years. These will be showcased at a free event in the Round Chapel from 2.00 to 4.30pm on Sunday 13 November. In addition to the exhibition, there will be film, local history storytelling, stalls, a zine by young people of their views of the area, tea and cakes and some surprises. A history map of Lower Clapton will be launched on the day and free copies will be available. Lower Clapton Heritage Project is run by the Hackney Historic Buildings Trust supported by funding from the Heritage Lottery Fund (HLF). For updates on the programme, see [www.hhbt.org.uk](http://www.hhbt.org.uk) or <http://www.roundchapel.org> from the beginning of November.



## Noticeboard

### The Garden House

The Garden House in De Beauvoir by architects Hayhurst and Co has been longlisted for the RIBA House of the Year 2016. The award is for the best new house designed by an architect in the UK.

### Stonebridge Gardens



Stonebridge Gardens (aka Snake Park) in Haggerston has been refurbished. There is now an entrance at the junction of Lee Street and Haggerston Road, three table tennis tables, and a hard court area suitable for five-a-side football and shooting hoops. In addition, a seating area has been created.

### The Geffrye Museum

Hackney Council has approved plans for the development of the Geffrye Museum. Designed by Wright and Wright Architects, the project aims to open up the museum's 18<sup>th</sup> century almshouse buildings and make better use of spaces previously unseen by the public. The plans include a learning pavilion and studio in the garden, a café within a former pub on the site, and an additional entrance opposite Hoxton Station. A gallery, library and study will be added to the museum's main building. Work is expected to begin at the end of 2017.

### Wetlands to Wetlands Greenway

A 3km cycle route that links Woodberry Wetlands to Walthamstow Wetlands has been opened. It was funded by a £120,000 grant from the Mayor of London's Big Green Fund.

### The Acorn



A planning application has been submitted for demolition of the Acorn in Queensbridge Road and the erection of a seven-storey building with nine flats. Locals are campaigning to save the pub.

### London Fields Lido

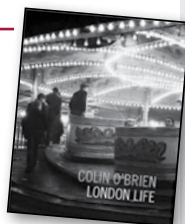
Repairs are to be made to London Fields Lido during the coming winter. The pool will be closed from the end of November. In addition to the repairs, improvements will be made to the indoor changing rooms and the main reception area.

### Green Flags

Hackney has received 21 Green Flags in a scheme to recognise the best parks and open spaces in the country. New Green Flags in the borough went to Mark Street Gardens and Woodberry Down Park.

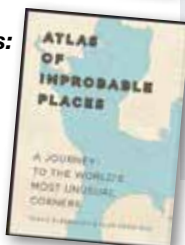
## Publications

**London Life** is a social record of the city by Hackney-based photographer Colin O'Brien, who died in August this year. Spitalfields Life, £25.



### Atlas of Improbable Places: A Journey to the World's Most Unusual Corners

by Stoke Newington writer Travis Elborough (with maps by Alan Horsfield) is an exploration of the obscure and bizarre, the beautiful and estranged. Aurum Press, £20.



### Along the Hackney Canal

by Freya Najade is a book of photographs taken along the waterways of East London, from the Regent's Canal to the River Lea. Hoxton Mini Press, £14.99.



**New Street Art** by Claude Crommelin (aka ClaudeLondon) documents the work of 150 street artists including Banksy and Stik in East London. ACC Editions, £19.95.



## Consultation on Hackney Central

Hackney Council has issued a draft masterplan ([www.hackney.gov.uk/spd](http://www.hackney.gov.uk/spd)) for Hackney Central.

The main points for discussion include relocating Clapton Bus Garage to create new workspace, retail space and homes, and developing new pedestrian routes.

The masterplan explores options for redeveloping the Tesco site in Morning Lane to feature new retail space (including a supermarket), workspace and homes.

Other proposals include expanding the public space at the bottom of the Narrow Way, improving Hackney Central Overground station, and redeveloping some Council-owned sites.

The closing date for the consultation is 14 November 2016.

Thanks to Kopykat for sponsoring this issue

### Kopykat Printing Limited

76 Rivington Street, London EC2A 3AY  
Tel: 020 7739 2451 Fax: 020 7729 5925  
[www.kopykat.co.uk](http://www.kopykat.co.uk)

Kopykat based in Shoreditch specialises in company stationery and high quality marketing material, we cover onsite litho printing, digital printing, copying and direct mail, environmentally we have recently been awarded Green Mark accreditation and we print using vegetable based inks, without the use of alcohol and deliver in an LPG vehicle.



**kopykat**  
Design and Print

## Hackney Society Events

### Hackney Society AGM

Tuesday 15 November 2016, 7.00pm

### Tour of the Arcola Theatre, 6pm

Meet at 6pm, Arcola Theatre, 24 Ashwin Street, E8 3DL. Book online at <http://hackneysociety.org/page/aggm2016>

*Spaces* is published by the Hackney Society.

Views expressed in the articles are not necessarily those of the Society.

**Edited by:** Monica Blake

**Layout by:** [design@gloryhall.com](mailto:design@gloryhall.com)

**Contributors:** Monica Blake, Carolyn Clark, Ruth Macdonald and Ruth Slatter

**Photos:** Monica Blake and Tim Soars

### The Hackney Society

The Round Chapel,  
1d Glenarm Road, London E5 0LY

T: 020 7175 1967

E: [info@hackneysociety.org](mailto:info@hackneysociety.org)

W: [www.hackneysociety.org](http://www.hackneysociety.org)

The Hackney Society is a registered Charity (No 107459) and Company limited by guarantee (No 04574188)

Help support our work by joining the Hackney Society.

Tel: on 020 7175 1967. email: [membership@hackneysociety.org](mailto:membership@hackneysociety.org)  
or visit: [www.hackneysociety.org](http://www.hackneysociety.org)